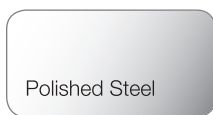


# U-Frame Stand



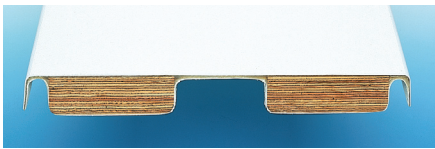
## Stand Color



Actual product colors may vary.

All installations must comply with all applicable local and national codes and installation must be completed in accordance with S.R.Smith installation instructions.

## Pairs with:



Fibre-Dive Board

## Or upgrade to:



Frontier III Board



Frontier IV Board\*

## The Economical Alternative

The U-Frame stand is a great entry-level stand ideal for price-sensitive users.

- Made of 1.90" OD, .049" or .065" wall, 304 stainless steel tubing, and includes a fulcrum cover
- Choose from a variety of board colors to match your pool slide and backyard décor.
- Board has a non-slip sanded tread for maximum safety.
- Pair with 6', 8', 10' or 12' boards – find the right size for your diving pool!

Model No.	Description	Board Size	Shipping Wt.	L	W	H
UF-12-100	12" U-Frame (.049)	6' or 8'	14 lbs.	33"	25"	2"
UF-18-101	18" U-Frame (.049)	6' or 8'	16 lbs.	33"	25"	2"
UF-18-102	18" U-Frame (.065)	6' or 8'	18 lbs.	34"	31"	2"
UF-24-103	24" U-Frame (.049)	10' or 12'	16 lbs.	34"	31"	2"
UF-24-102	24" U-Frame (.065)	10' or 12'	19 lbs.	34"	31"	2"

\*Not recommended for salt chlorine pools

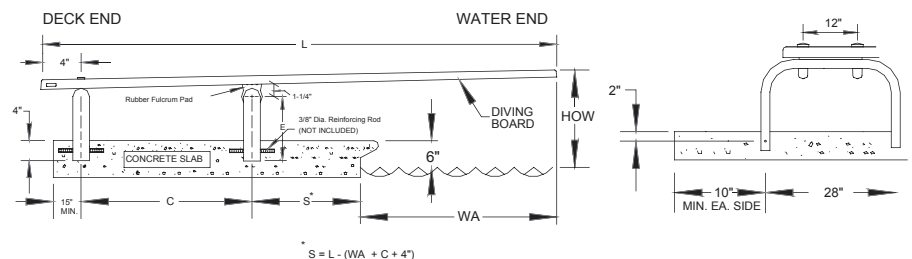
## U-Frames with 8' Frontier IV Board\*

The special Steel Meter Stand designed specifically for our Frontier IV board is a great alternative to consider for pools with heavy diving traffic and more athletic pool users.

- The Frontier IV board comes in an 8' length
- Mounting bolts are on 11" centers
- Frontier IV comes in white, with a matching non-slip sanded tread for maximum safety
- 400 lb. weight limit

Model No.	Description	Board Size	Shipping Wt.	L	W	H
UF-15-200	U-Frame only	8'	21 lbs.	33"	25"	2"
68-209-1582	U-Frame w/board	8'	201 lbs. (2 boxes)	98" 45"	20" 17"	3" 14"

The Frontier IV board has 11" bolt centers and requires these SPECIAL U-Frames that will only work with this board. Weight limit 400lbs.



S.R. SMITH CANNOT GUARANTEE CUSTOMER'S CONCRETE OR THICKNESS

RECOMMENDED Compressive strength of concrete is 3500 psi or greater.

SLAB THICKNESS = 6" (MIN.) WIDTH = 4" (MIN.)