

Product Information

Series 2 Ultraviolet Sanitizer System

UV System Specifications



The ultraviolet sanitizer system shall be a Trident Ultraviolet Corporation Series 2 ultraviolet water sanitation system, Model S2-_____, rated at _____ volts, 50/60 Hz. The wet reactor chamber shall be 9 inches (23cm) in diameter. The chamber shall be constructed from injection molded, UV inhibited, virgin polymeric material, and (optional) shall have the interior of the chamber lined with a Type 304L Stainless Steel reflector. Within the reactor shall be _____ UV-C High Output, Low Pressure Lamp(s). Each lamp shall be rated at 58 watts input intensity, and shall have a designed dose performance rating of no less than 30,000 $\mu\text{watts/sec/cm}^2$ (30 mJ) at lamp end-of-life (EOL). The lamp EOL shall be no less than 13,000 hours of operation. The UV system color shall be neutral gray and there shall be a clear 360° center band that shall display the actual lamp ON status of all lamps when viewed from any direction. System construction shall be such that the UV system shall be suitable for use in either indoor or outdoor locations.

The UV system shall incorporate an exterior reading pressure gauge utilizing both PSI and kPa scale, a pressure switch with bypass capability built-in, a system winterizing drain valve, and integral mounting feet for securing the system in place. The UV system shall be supplied with both 2 in and 63mm fully removable/replaceable PVC inlet and outlet unions. Four inlet ports and four outlet ports shall be provided to accommodate multi-directional piping to and from the UV system. Six blanking caps shall be provided to close unused plumbing ports after inlet/outlet selection.

Contained within a polymeric electrical enclosure shall be _____ electronic lamp ballast(s). Each shall be equipped with plug connections negating any on-site wiring of the operating control system. The UV system shall be equipped with a 96 in. (244cm) electrical supply cord with a local service plug molded on the cord end. No metallic components shall be exposed to the outside, and no electrical bonding shall be required. Trident UV's US - EPA Registration number shall be listed on the exterior of the system and on all cartons and printed materials. Each UV system shall be enclosed in a Heavy Duty cushioned cardboard shipping carton suitable for individual unit UPS type shipping and a printed Limited Warranty and full printed Installation and Operating instructions shall be included within the packaging.

Model	Part Number	Voltage	Lamps	Flow
S2-11	35-820011	120V/50/60Hz	1	52 GPM/11.3 m3/hr
S2-21	35-820021	230V/50/60Hz	1	52 GPM/11.3 m3/hr
S2-12	35-820012	120V/50/60Hz	2	99 GPM/22.5 m3/hr
S2-22	35-820022	230V/50/60Hz	2	99 GPM/22.5 m3/hr

All capacities are nominal

Model	Part Number	Voltage	Lamps	Flow
S2-13	35-820013	120V/50/60Hz	3	140 GPM/31.8 m3/hr
S2-23	35-820023	230V/50/60Hz	3	140 GPM/31.8 m3/hr
S2-14	35-820014	120V/50/60Hz	4	178 GPM/40.4 m3/hr
S2-24	35-820024	230V/50/60Hz	4	178 GPM/40.4m3/hr

POOL SIZING CHART

Trident Model	Maximum Flow Rate (GPM)	Maximum Flow Rate (m3/hr)	Max Pool Volume 12 Hr. Turnover (Gallons)	Max Pool Volume 12 Hr. Turnover (m3)	Max Pool Volume 8 Hr. Turnover (Gallons)	Max Pool Volume 8 Hr. Turnover (m3)
S2-11/S2-21	52	11.3	37440	135.6	24960	90.4
S2-12/S2-22	99	22.5	71280	270.0	47520	180.0
S2-13/S2-23	140	31.8	100800	381.6	67200	254.4
S2-14/S2-24	178	40.4	128160	484.8	85440	323.2

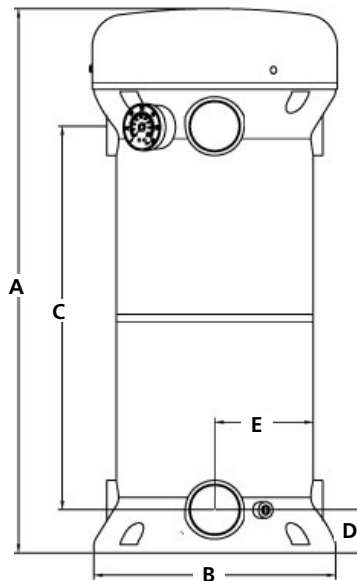
All capacities are nominal

POND SIZING CHART

Trident Model	Maximum Flow Rate (GPM)	Maximum Flow Rate (m3/hr)	Max Pond Volume 2 Hr. Turnover (Gallons)	Max Pond Volume 2 Hr. Turnover (m3)	Max Pond Volume 3 Hr. Turnover (Gallons)	Max Pond Volume 3 Hr. Turnover (m3)
S2-11/S2-21	52	11.3	6240	22.6	9360	33.9
S2-12/S2-22	99	22.5	11880	45.0	17820	67.5
S2-13/S2-23	140	31.8	16800	63.6	25200	95.4
S2-14/S2-24	178	40.4	21360	80.8	32040	121.2

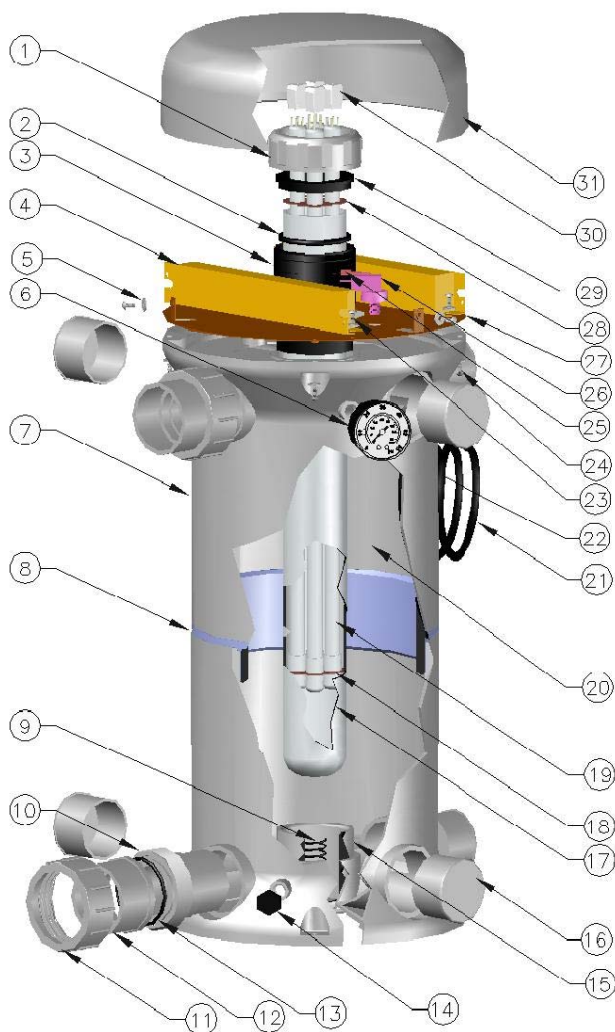
All weights and dimensions are nominal

PHYSICAL DIMENSIONS



Trident Model	Dim. A	Dim. B	Dim. C	Dim. D	Dim. E	Empty Weight	Operating Weight	Shipping Weight	Carton Size Size
All - Imperial	25.30 in.	11.20 in.	17.82 in.	2.02 in.	4.56 in.	18 lbs	47 lbs	25 lbs	13x13x32 in.
All - Metric	64.26 cm	28.45 cm	45.26 cm	5.13 cm	11.58 cm	8.2 kg	21.3 kg	11.3 kg	33x33x81.3 cm

All weights and dimensions are nominal



MATRIX						PARTS		
BALLASTS						#19	#23	#30
VOLTAGE	UV70-101101	UV70-101102	UV70-101201	UV70-101202				
120V - 1 LAMP	1					1	2	1
120V - 2 LAMPS		1				2	2	2
120V - 3 LAMPS	1	1				3	4	3
120V - 4 LAMPS		2				4	4	4
230V - 1 LAMP			1			1	2	1
230V - 2 LAMPS				1		2	2	2
230V - 3 LAMPS			1	1		3	4	3
230V - 4 LAMPS				2		4	4	4

ITEM	DESCRIPTION	QTY	PART#
31	ENCLOSURE TOP - GRAY	1	UV86-022700
30	LAMP SOCKET	SEE MATRIX	UV52-021000
29	QUARTZ O'RING COMPRESSION WASHER	1	UV86-022500
28	LAMP CENTERING DISK - QUARTZ TUBE OD - TOP	1	UV86-032000
27	METAL TOP BASE PLATE	1	UV82-040000
26	PRESSURE SWITCH	1	UV70-023040
25	WYE PUSH ON TAB - BRASS	1	UV52-021011
24	SCREW 10-32X1/2" PPMS-S/S (SEE NOTE 2)	7	UV40-061050
23	SCRFW 10-32X1/4" PPMS-S/S	SFF MATRIX	UV40-061025
22	PIGTAIL STRAIN RELIEF	1	UV58-061000
21	POWER CORD - 96" NEMA (SEE NOTE 1)	1	UV64-001000
20	INNER REFLECTOR	2	UV82-500200
19	UV LAMP 58W 21" LONG	SEE MATRIX	UV70-114100
18	LAMP CENTERING DISK - QUARTZ TUBE ID - BOTTOM	1	UV86-033000
17	QUARTZ TUBE 2-3/8"X21"	1	UV58-602000
16	BLANKING CAP - GRAY	6	UV86-022600
15	QUARTZ TUBE END CUP - GRAY	1	UV86-022400
14	WINTERIZING DRAIN PLUG	1	UV86-121000
13	UNION SEAL O'RING	2	UV44-100200
12	UNION HALF 03mm SKT - GRAY	2	UV80-110000
12	UNION HALF 2" SKT - GRAY	2	UV86-110002
11	UNION NUT - GRAY	2	UV86-022301
10	UNION 2" SPIGOT MALE THREADS - GRAY	2	UV86-020208
9	QUARTZ TUBE SUPPORTING SPRING	1	UV40-501100
8	JOINER RING - CLEAR	1	UV86-022100
7	WATER CHAMBER HALF - GRAY	2	UV86-022200
6	PRESSURE GAUGE	1	UV84-022340
5	FLAT WASHER #10 - S/S	11	UV40-080100
4	BALLAST ASSEMBLY	SEE MATRIX	
3	QUARTZ TUBE SEALING INSERT	1	UV86-022300
2	QUARTZ TUBE SEALING O'RING	1	UV44-102000
1	QUARTZ TUBE SEALING COMPRESSION NUT - GRAY	1	UV86-022301

NOTES: 1. CONSULT YOUR SUPPLIER FOR LOCAL POWER CORD CONFIGURATIONS
2. SECURES BALLASTS #4 AND ENCLOSURE TOP #31