



VALVE ACTUATOR

IMPORTANT SAFETY INSTRUCTIONS READ AND FOLLOW ALL INSTRUCTIONS SAVE THESE INSTRUCTIONS

⚠ WARNING

Before installing this product, read and follow all warning notices and instructions provided with this pump. Failure to follow safety warnings and instructions can result in severe injury, death, or property damage. Call (800) 831-7133 for additional free copies of these instructions.

Installation Instructions

APPLICATION

For automatic operation of a 2-way or 3-way valve.

CAUTION: Use Class 2 Power Input Source only.

INSTALLATION

1. Remove knob, handle and four screws from the valve cover.
2. Align splines of the actuator shaft over shaft of valve.
3. If the actuator is not aligned with mounting holes on valve cover, rotate the actuator (while still attached to valve) until the actuator is positioned correctly over the valve.
4. Use the 4 mounting screws provided to mount actuator to valve cover, **USE SELF TAPPING SCREWS WHEN REQUIRED.**
5. Mount the valve handle and knob to the actuator.
6. Connect cord into automation circuit board at appropriate Valve Actuator socket.



VALVE POSITION

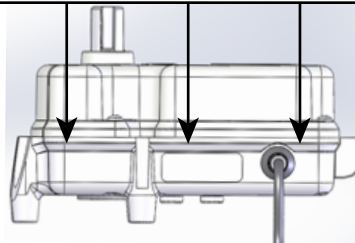
If the valve rotates to the wrong position, adjust the switch on the back of the actuator between ON1 and ON2 positions. This will rotate the valve to the correct position.

ADJUSTING VALVE ACTUATOR

Most installations do not require adjusting the valve actuator. However, if a bypass, is desired follow the steps below:

1. Remove valve actuator cover.
2. Loosen lock nut with a pair of pliers (this allows moving the adjustment cams).
3. Rotate upper cam to change clockwise rotation stop point. Rotate lower cam to change counter-clockwise rotation stop point.
4. The toggle switch on the back of the valve actuator can be used to verify if the new adjustment is correct (flip between ON1 & ON2).
5. Tighten lock nut and replace cover.
6. Tighten down the cover screws in an X-pattern.
Be sure there are no protruding wires or gaps around the case perimeter.

Be sure there are no protruding wires or gaps around the case perimeter.

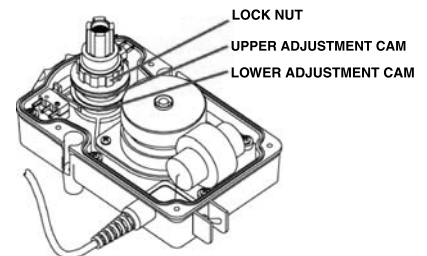
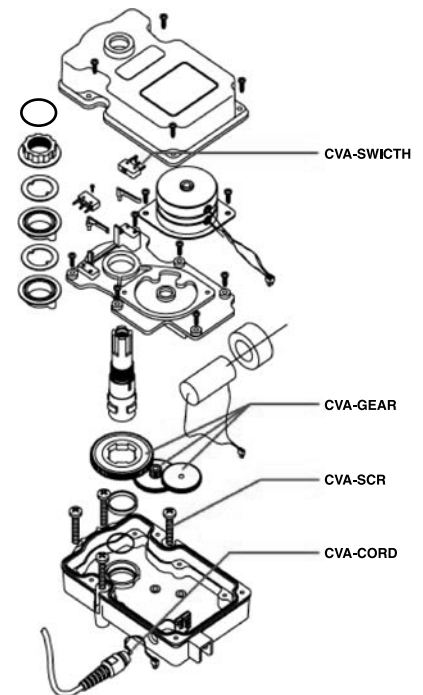
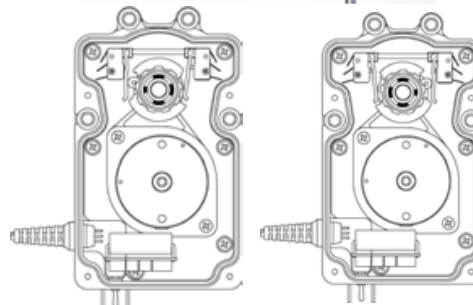


SPECIFICATIONS

Voltage: 24 VAC
 Amp: 0.65
 Torque: 250 inch pounds
 Size: L 7.5", H 4.75", W 4.25"
 Material: Gears - Steel
 Grease: MoS2 Lubricant
 Cord Length: 25 ft.
 Rated: Outdoor use

REPLACEMENT PARTS

8691030 REPLACEMENT CABLE for Actuator
 270077 GEAR SET for Actuator; 3 GEARS
 CVASCR MOUNTING SCREW for Actuator (qty. 4)
 520010Z MICRO-SWITCH for Actuator



Customer Support 800.831.7133