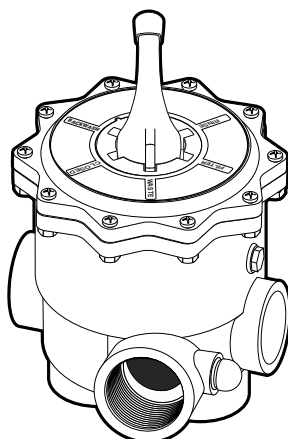


STA-RITE®

MULTI-PORT FILTER VALVE

O W N E R ' S M A N U A L



INSTALLATION, OPERATION & PARTS

MODELS

SIDE MOUNT – 1-1/2"

18202-0150
18202-0150H
18201-0110
18202-0250

SIDE MOUNT – 2"

18201-0200
18201-0200H
18201-0300

This manual should be furnished to the end user of this valve; its use will reduce service calls and chance of injury and will lengthen valve life.

Sta-Rite Pool/Spa Group

293 Wright Street, Delavan, WI 53115

International: 262-728-5551, FAX: 262-728-7550

www.starite.com

Union City, TN • Delavan, WI • Mississauga, ON • Murrieta, CA

© 2005, Sta-Rite Industries

S532 (Rev. 6/24/05)


MULTI-PORT FILTER VALVE


To avoid unneeded service calls, prevent possible injuries, and get the most out of your filter, READ THIS MANUAL CAREFULLY!


Table of Contents


Safety Instructions	2
General Information.....	3
Functions	4
Maintenance.....	4-5
Repair Parts List	6,7
Performance Curves	7
Warranty.....	8

READ AND FOLLOW ALL INSTRUCTIONS!

 This is the safety alert symbol. When you see this symbol on your system or in this manual, look for one of the following signal words and be alert to the potential for personal injury.


 **DANGER** warns about hazards that **will** cause death, serious personal injury, or major property damage if ignored.

 **WARNING** warns about hazards that **can** cause death, serious personal injury, or major property damage if ignored.

 **CAUTION** warns about hazards that **will** or **can** cause minor personal injury or property damage if ignored.

NOTICE indicates special instructions not related to hazards.

Carefully read and follow all safety instructions in this manual and on equipment. Keep safety labels in good condition; replace if missing or damaged.

 **WARNING** **Hazardous pressure** Incorrectly installed or tested equipment may fail, causing severe injury or property damage. Read and follow instructions in owner's manual when installing and operating equipment. Have a trained pool professional perform all pressure tests.

1. Do not connect system to a high pressure or city water system.
2. Use equipment only in a pool or spa installation.
3. Trapped air in system can cause explosion. BE SURE all air is out of system before operating or testing equipment.

Before pressure testing, make the following safety checks:

- Check all clamps, bolts, lids, and system accessories before testing.
- Release all air in system before testing.
- Tighten Sta-Rite trap lids to 30 ft. lbs. (4.1 kg-cm) torque for testing.
- Water pressure for test must be less than 25 PSI (172 kPa).
- Water Temperature for test must be less than 100° F. (38° C).
- Limit test to 24 hours. After test, visually check system to be sure it is ready for operation. Remove trap lid and retighten hand tight only.

NOTICE: These parameters apply to Sta-Rite equipment only. For non-Sta-Rite equipment, consult manufacturer.

GENERAL

Inspect valve upon receipt and file claim with carrier if parts are damaged or missing.

Valve may be used with Sta-Rite DE or sand filters, except Model HRP36.

Mating half of unions are on filters shown on Table I.

Connecting Multi-Port Valve To Filter System

For filters listed below, select correct valve clamp connector kit from the chart.

Use care before assembly not to damage union sealing surfaces or O-Ring. Install union O-Rings in groove; tighten union collar hand tight.

FOR SLIP FITTINGS: Use correct solvent/cement when fitting piping or adapters to slide valve. The valve body is ABS plastic, thus any good quality ABS to PVC solvent can be used, such as Weld-On #793 or #710. Use P70 (purple) primer on PVC components only. Allow a minimum of four hours drying time prior to pressure testing or operation. If ABS adapters are glued into valve ports in lieu of PVC fittings, use Weld-On Solvent #771, #1707 or #773.

▲WARNING To avoid serious personal injury or property damage, follow cement manufacturer's instructions exactly.

NOTICE: FOR THREADED FITTINGS: Use Plasto-Joint Stik¹, teflon tape or RTV. Other substances may degrade plastic and create poor joints and leaks. Do not overtighten.

¹Lake Chemical Co., Chicago, IL

TABLE I – Filters and connector kits to use with valves.

Filter Connection Chart						
Valve No.	Port Size	Valve Outflow*	Use With Filter model	18201 and 18202 Series Valves Replace	Use Hose Kit No.	
					with 2" Pipe	with 1-1/2" Pipe
18202-0150 for Union Connections or 18202-0150H, for Hose Connections	1-1/2"	Bottom	DES25 DES36	WC212-143P (Unions)	–	–
			HRS16 HRS20	14964-0014 (Hoses)	24750-0624 2"x1-1/2"	24750-0331 1-1/2"x1-1/2"
18202-0250 for Union Connections	1-1/2"	Top	PLDE36 PLDE48	–	–	–
18201-0110	1-1/2"	Top	S200BP-1M S240BP-1M	–	–	–
18201-0200 for Union Connections or 18201-0200H for Hose Connections	2"	Bottom	DEP36, DEPB36 DEP51, DEPB51 DEP83, DEPB83 DES51, DES60	WC212-144PN WC212-150PN (Unions)	–	–
			HRP20, HRP24 HRP30 HRS24 S7M120, S8M150 S7D75, S8D110	WC212-150PA 14971-0000 (Hoses)	24750-0341 2"x2"	–
18201-0300	2"	Top	S7MD60 S7MD72 SR-300-2U SR-360-2U	– –	– –	– –

* When the multiport valve handle is in filter position, flow to filter will be from this port.

FUNCTIONS OF THE MULTI-PORT VALVE

⚠ WARNING

Hazardous pressure. Can cause severe injury or major property damage from valve blow up.

Release all pressure and read instructions before working on system.

⚠ To avoid severe injury and major property damage, stop pump before changing handle positions.

⚠ To avoid major property damage due to flooding, make sure pointer is accurately positioned and down all the way before restarting pump.

Press down on handle to release pressure before turning.

1. FILTER – Normal position during operation of system.
2. BACKWASH – Position when operating system to purge filter of accumulated debris. This normally is necessary when filter pressure gauge reads 10 PSI higher than starting pressure on a clean filter. Consult your filter operating instructions.
3. RINSE – This position is only used with sand filters and is designed to flush stray sand from system before returning to filter operation after backwashing. Consult your filter operating instructions.
4. CLOSED – Valve may be set in closed position when servicing filter tanks located below water level.
5. RECIRCULATE – This position permits pump to continue recirculating water (chemicals, heat, etc.) without flow through filter. This is advantageous when filter or its components are being repaired or replaced.
6. WASTE – This position permits draining or lowering of pool water level. When pump is stopped with valve in this position, quickly move handle to another position to avoid air getting into piping.

VALVE MAINTENANCE

⚠ To avoid severe personal injury and major property damage, stop pump and release all pressure from system before servicing valve.

No regular maintenance is required for proper operation of multi-port valve.

Winterizing For Freezing Climates:

Place valve handle in an intermediate position, between regular setting positions.

Part Replacement:

To prevent flooding, make sure that system is drained or isolation valves are closed before opening multi-port valve.

Replacing Handle:

1. STOP PUMP and release all pressure from system.
2. Place handle in "FILTER" position.
3. Remove all bolts and nuts holding cover to valve body.
4. Remove cover, handle, and plug as a unit from valve body.
5. Compress plug as shown in Figures 1 and 2.

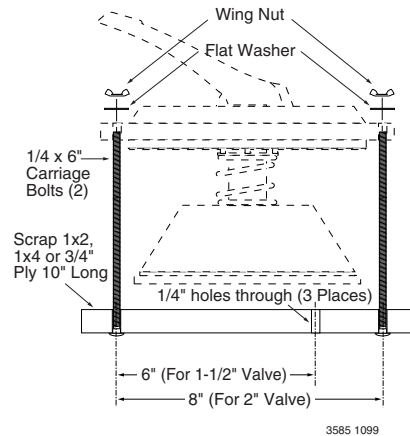


Figure 1 – Fixture dimensions for valve spring compressor

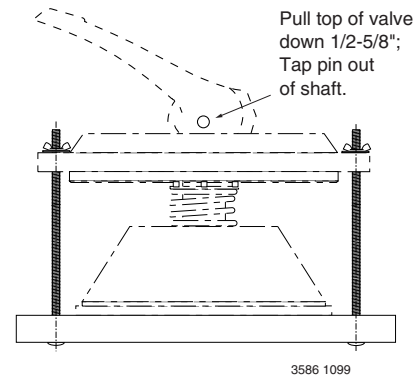


Figure 2 – Tighten wingnuts to compress spring

6. Remove handle pin from handle; remove handle and replace with new one, making sure pointer is in "FILTER" position.
7. Replace pin by tapping lightly into place with hammer and punch.
8. Remove fixture, align cover pin (See Figure 3), and reinstall cover and plug. Tighten all bolts securely.

To prevent flooding, make sure that system is drained or isolation valves are closed before opening multi-port valve.

Replacing Cover and Plug Assembly (as a unit):

1. STOP PUMP and release all pressure from system.
2. Remove all bolts and nuts around perimeter of cover.
3. Remove assembly by lifting straight up.
4. Align cover pin (see Figure 3) and install new cover and plug. Press down on cover to allow bolts to engage nuts; tighten each bolt securely.

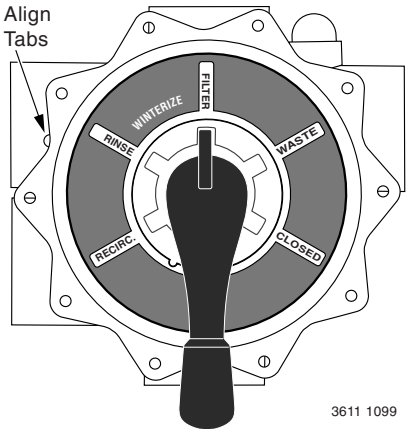


Figure 3 – Cover alignment

Replacing Internal Valve Parts:

1. STOP PUMP and release all pressure from system.
2. Place handle in “FILTER” position.
3. Remove all bolts and nuts.
4. Remove cover by lifting straight up.
5. Remove handle pin and handle (See procedure on Page 4).
6. Remove washer.
7. While disassembled, check condition of plug, rubber gasket, spring, O-Ring, and internal plastic washer. If any of these parts appear worn, replace them.
8. Reassemble plug, cover, and handle by compressing spring (See Figures 1 and 2) and reversing procedure on Page 4.
9. Before reinstalling cover, be sure plug and handle are in same position as when cover was removed.
10. Make sure tab on valve cover aligns with pin on top of pump port (see Figure 3). Press down on cover or set handle to “WINTERIZE” to allow bolts to engage nuts. Tighten each bolt securely.

Spider Gasket Replacement:

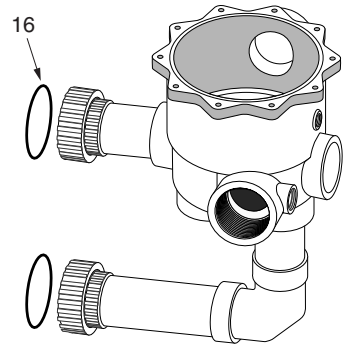
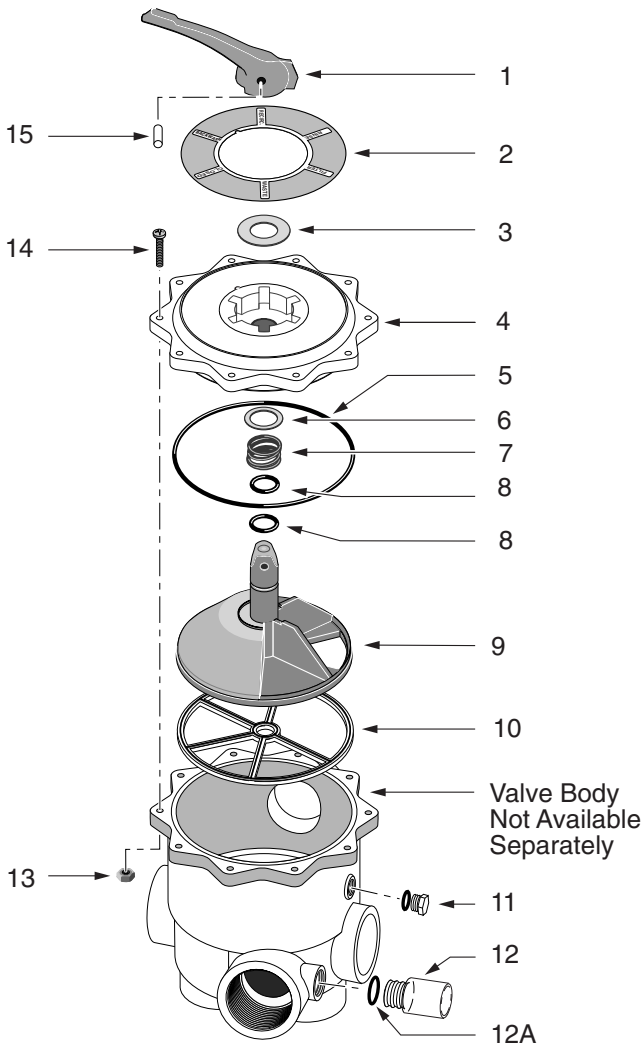
NOTICE: Read instructions completely before starting. Once Step 6 is started, continue through Step 10 without interruption.

1. STOP PUMP and release all pressure from system.
2. Place the selector handle at the ‘Winterize’ position (this lifts the plug off the seat).
3. Remove the bolts and nuts holding the cover to the valve body. Remove the cover assembly.
4. Remove the old gasket from the valve body.
5. Make sure that the gasket groove is free of water, grease, oils, debris and parts of the old gasket. Use alcohol to degrease.
6. **NOTICE:** Once this step is started, continue through Step 10 without interruption.

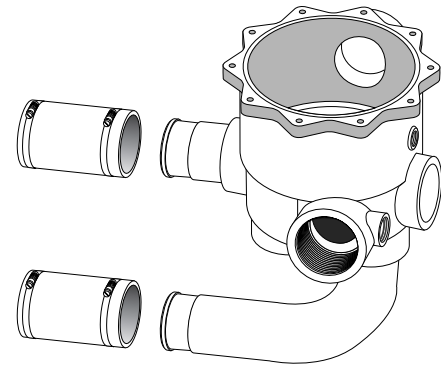
Using Loctite® 401 or 416, apply glue sparingly (a bead about 1/16” wide) to the bottom only (not the sides) of the spider groove in the valve body. The glue lines must be continuous and intersect at the intersections of the grooves.

7. Insert the new gasket into the groove with the rounded bead up. Press the gasket firmly into all groove areas to seat the new gasket evenly.
8. Align the tab on the cover assembly with the pin on the valve body (See Figure 3) and insert the cover assembly into the body, fastening it with the bolts and nuts removed in Step 3. Tighten all bolts securely.
9. Depress the valve handle and rotate it to the closest standard position (FILTER or RINSE), being careful not to rub the plug on the new gasket. Release the handle, allowing the plug to hold the gasket in place while curing.
10. Minimum cure time is 2 hours. Curing for 24 hours is recommended for full strength.

Side Mount Multiport Valve Assembly



Models 18202-0150, 18201-0200, 18201-0110, 18202-0250 and 18201-0300 include union halves as shown. Table 1, Page 3 gives filter models and correct valves to use with filters.



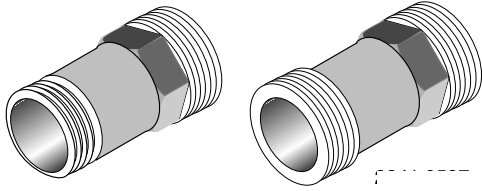
Models 18202-0150H and 18201-0200H require hose connector kits (sold separately – See Table 1, Page 4 for kit and filter numbers).

REPAIR PARTS LIST

Key No.	Description	Qty.	18201-0110	18201-0300
			18202-0150	18201-0200
			18202-0150H	18201-0200H
			18202-0250	2" Valve
			1-1/2" Valve	
1	Handle	1	14971-SM10E1	14971-SM10E1
2	Label Decal	1	32155-4133	32155-4136
3	Washer	1	14971-SM10E3	14971-SM10E3
4	Valve Cover	1	14971-SM10E6	14971-SM20E6
5	Cover O-Ring	1	14971-SM10E7	14971-SM20E7
6	Washer	1	14971-SM10E8	14971-SM10E8
7	Spring	1	14971-SM10E9	14971-SM10E9
8	O-Ring	2	14971-SM10E10	14971-SM10E10
9	Plug	1	14971-SM10E11	14971-SM20E11
10	Spider Gasket	1	14971-SM10E12	14971-SM20E12
11	1/4" NPT Plug w/O-Ring	1	U178-920P	U178-920P
12	Sight Glass w/O-Ring	1	14971-SM10E17	14971-SM10E17
13	Nut	()	14971-SM10E14(6)	14971-SM10E14(10)
14	Bolt	()	14971-SM10E4(6)	14971-SM10E4(10)
15	Handle Pin	1	14971-SM10E2	14971-SM10E2
16	O-Ring (-0150, -0200 only)	2	U9-362	U9-362
•	Key Assembly (Includes 1-11,13)	1	14971-SM10E50	14971-SM20E50

• Not illustrated.

Sight Glass, Sight Glass Adaptors



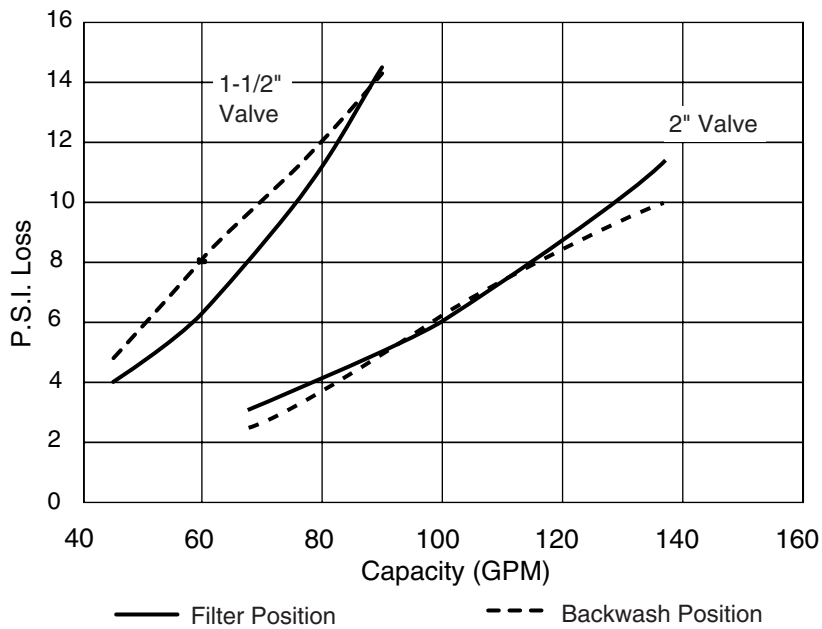
Sight Glass Adaptor – 1 1/2" NPT & HoseOrder #14962-0012

Sight Glass Adaptor – 1 1/2" NPTOrder #14962-0013

• Male Adaptor – 1 1/2" NPT to 1 1/2" ID Hose.....Order #U78-767P

• Not illustrated.

Performance Curves – Multi-Port Valves 1 1/2" and 2" Side Mount Valves with Piping



STA-RITE LIMITED WARRANTY

Pumps, filters, skimmers, underwater lights (excluding bulbs), accessories and fittings manufactured by Sta-Rite are warranted to be free of defects in material and/or workmanship for one (1) year from the original date of installation.

The foregoing warranties relate to the original consumer purchaser ("Purchaser") only. Sta-Rite Industries shall have the option to repair or replace the defective product, at its sole discretion. Purchasers must pay all labor and shipping charges necessary to replace the product covered by this warranty. Requests for warranty service must be made through the installing dealer. This warranty shall not apply to any product that has been subject to negligence, misapplication, improper installation or maintenance, or other circumstances which are not in Sta-Rite's direct control. Failure to have product installed by a professional in compliance with local codes will void any and all manufacturers warranty.

This warranty sets forth Sta-Rite's obligation and Purchaser's exclusive remedy for defective products.

STA-RITE SHALL NOT BE LIABLE FOR ANY CONSEQUENTIAL, INCIDENTAL OR CONTINGENT DAMAGES WHATSOEVER.

THE FOREGOING WARRANTIES ARE EXCLUSIVE AND IN LIEU OF ALL OTHER EXPRESS WARRANTIES. IMPLIED WARRANTIES, INCLUDING BUT NOT LIMITED TO THE IMPLIED WARRANTIES OF MERCHANTABILITY AND FITNESS FOR A PARTICULAR PURPOSE, SHALL NOT EXTEND BEYOND THE DURATION OF THE APPLICABLE EXPRESS WARRANTIES PROVIDED HEREIN.

Some states do not allow the exclusion or limitation of incidental or consequential damages or limitations on how long an implied warranty lasts, so the above limitations or exclusion may not apply to you. This warranty gives you specific legal rights and you may also have other rights which vary from state to state.

Supersedes all previous publications.

Product Specific Warranties (from date of installation)

Product Family	Limited Warranty	Exceptions
Filters	1 Year	System 3 Tank Bodies - 10 Yrs
Filter Valves	1 Year	
Pumps	1 Year	
Heaters	2 Years	*Commercial Application - 1 Yr
Controls	1 Year	
Above Ground Systems	1 Year	
Lights and Niches	1 Year	Lamps and Bulbs - 90 Days
White Goods	1 Year	
Maintenance Equipment	90 Days	
Drainer/Utility Pumps	90 Days	
Replacement Parts	90 Days	
Cleaners: Lil Shark	1 Year	
Cleaners: Calypso	1 Year	
Cleaners: Pool Shark	2 Years	Footpad and Seal Flaps - 1 Yr
Cleaners: Great White	2 Years	

* Commercial and multi-family application.

Retain this warranty certificate in a safe and convenient location for your records.

For technical information about this product, contact the installer or call Sta-Rite at 262-728-9181.

Visit www.staritepool.com

- for more information about Sta-Rite products listed above
- to locate a Sta-Rite dealer near you

CREATE A RECORD OF YOUR WARRANTY AT STA-RITE:

- Complete a warranty registration at www.staritepool.com by clicking on "Register Products" and selecting Sta-Rite Pool **OR**
- Complete bottom portion completely and mail within 10 days of installation to Sta-Rite, Attn.: Pool Warranty Dept., 293 Wright St., Delavan, WI 53115



Warranty Registration Card

Name _____

New installation Replacement

Address _____

Years pool has been in service less than 1 1-3 3-5 5-10

City _____ State _____ Zip _____

This product was purchased from:

Installation (or Purchase) Date _____

Company name _____

Product Purchased _____

Address _____

Model Number _____

City _____ State _____ Zip _____